

# FastCover



## **VERSATILE**

Wide ranging applications including temporary car parks over a stone base, marquee flooring, playgrounds, site walkways, warehouse flooring and livestock flooring.

## **COST-EFFECTIVE**

Economical compared to other systems on the market.

Strong and durable to provide a return on investment.

## **SAFE**

Anti-slip surface eliminates trip hazards.

Interlocking lips enable smooth joins.

Gentle edging ramps provide a safe transition to ground level.

## **ENVIRONMENTALLY FRIENDLY**

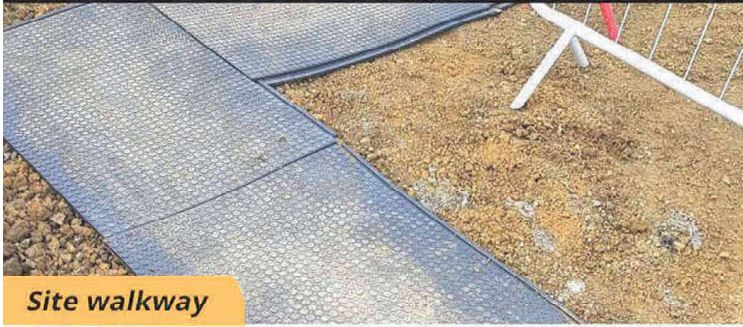
Made from 100% recycled PVC.

*For cost-effective, easy to lay flooring that won't cost the earth, FastCover is the strong and versatile solution perfect for a range of challenging applications.*

**FENCELINE**  
**BARRIERS AND TRACKWAY LTD**

**0333 358 0299**  
[info@fenceline-uk.com](mailto:info@fenceline-uk.com)  
[www.fenceline-uk.com](http://www.fenceline-uk.com)

# FastCover



*Site walkway*



*Fast and easy to join*



*Warehouse flooring*



*Ideal as a temporary construction site car park*



*Facilitates site Health & Safety*



## **DIMENSIONS & WEIGHT**

Length:..... 1200mm

Width:..... 800mm

Core Thickness:..... 22mm (Option 1)

..... 43mm (Option 2)

Weight:..... 20kg (Option 1)

..... 32kg (Option 2)

**FENCELINE**  
**BARRIERS AND TRACKWAY LTD**

**0333 358 0299**  
**info@fenceline-uk.com**  
**www.fenceline-uk.com**